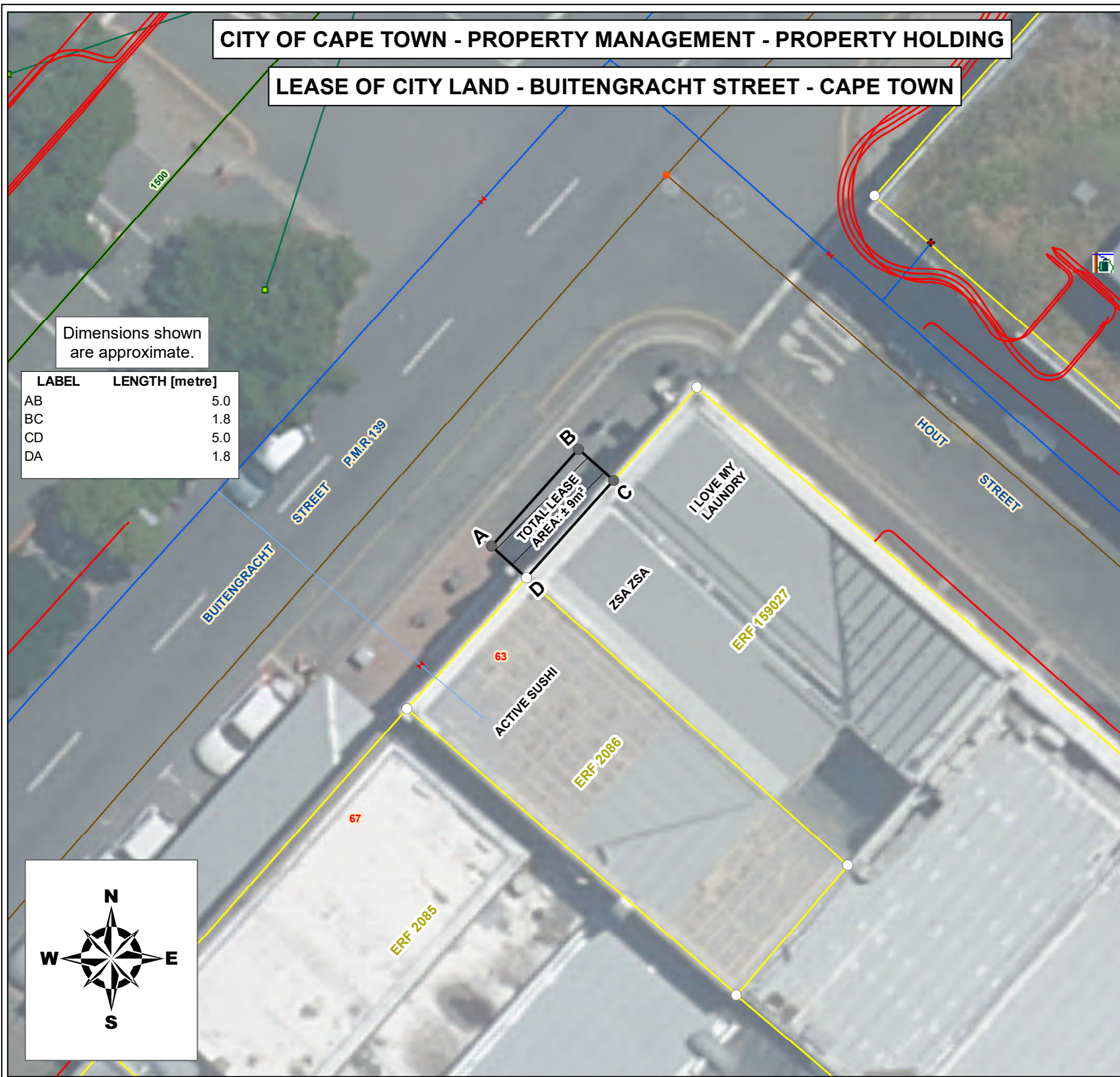


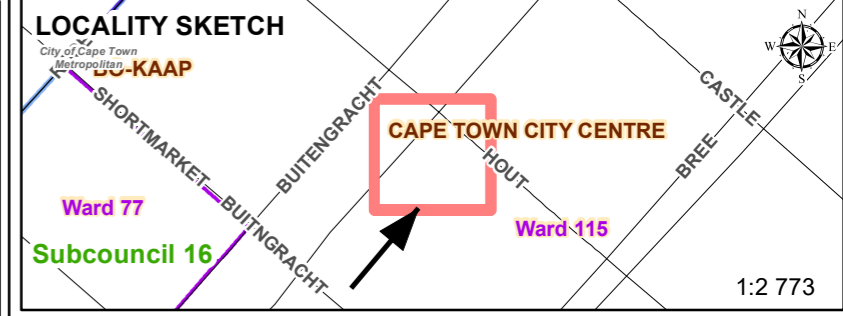
CITY OF CAPE TOWN - PROPERTY MANAGEMENT - PROPERTY HOLDING

LEASE OF CITY LAND - BUITENGRACHT STREET - CAPE TOWN



Dimensions shown are approximate.

LABEL	LENGTH [metre]
AB	5.0
BC	1.8
CD	5.0
DA	1.8



Legend

Title Points

- Non-Surveyed
- Surveyed
- Dimensions Length
- ▭ Applicant Property
- ▭ LEASE AREA
- Informal Settlement Taps
- Informal Settlement Toilets

PointType

- Elec - Substations
- Elec - Overhead Lines
- Elec - Underground Cables
- ⊕ Water - Hydrants Reticulation
- ⊗ Water - Valves Reticulation
- Water - Reticulation Connection
- Water - Mains Reticulation
- Water - Bulk Reticulation

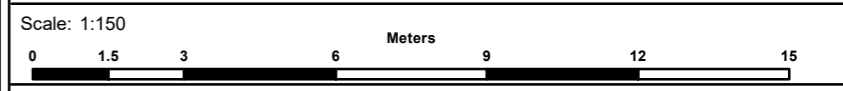
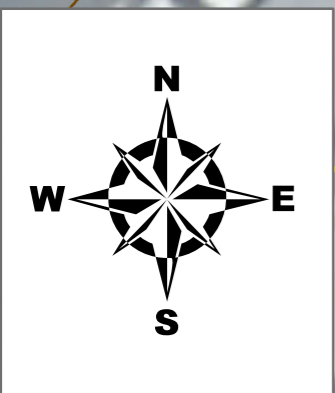
Notes:

The figure ABCD shown hatched represents Public Street, a portion of (Unregistered State Land, Cape Town) in extent of approximately 9m² available to lease for outdoor seating purposes to

- HERITAGE ONE BODY CORPORATE (SS HERITAGE ONE)**
- Applicant's Property

Property of above (Erf 159027, Cape Town) shown bordered grey and zoned: Mixed Use 3 (SS 548/1998)
 - City Property

City Land (Unregistered State Land) zoned: Public Street



Drawn By: Name & Surname	Date: Monday, 30 October 2023
Refer To: SG NOTING SHEET: M4341 SG No.290/1997 Unregistered State Land	GIS Operator: SIPHELELE NAMFU Surveyor: SIPHELELE NAMFU
Case No.: 130010090	Checked:
Property Ref: LIS KEY: 410926 (Erf 159027)	Leasing Section Head: PIERRE JOHAN KOTZE
File Ref: 14/3/6/1/2/2335/00/159027	Email: Pierre.Kotze@capetown.gov.za
Memo/Coordinate:	Plan Nr: PLAN - 130010090

Please note this is an A3 map. To view the map in scale it must be printed on an A3 page.